



1 May 2008

Centralised Company Announcements Office
ASX Limited
20 Bridge Street
Sydney NSW 2000

Dear Sir,

CRJ 2008/012 – Company Presentation

The following presentation was given today by the Company's Managing Director, Mr Robert Scargill at the South Australian Resources and Energy Investment Conference.

Sincerely,

A handwritten signature in blue ink that reads "Scargill".

Robert Scargill
Managing Director



April 2008

Building A
South Australian
Resources Company



Copper Range – Company Overview

ASX Code : CRJ

ASX listing date : 2006

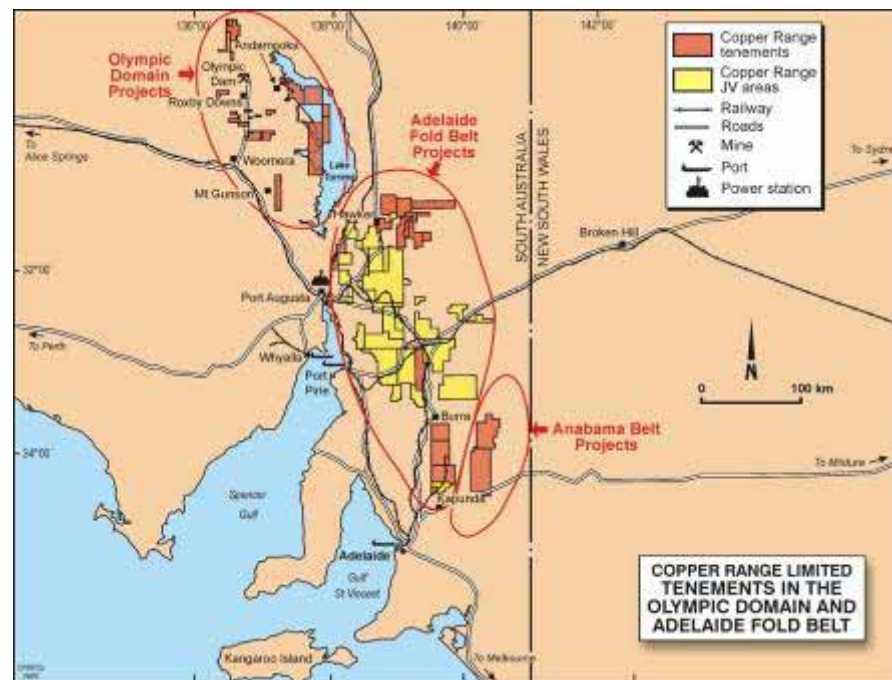
Market cap @ 10c : \$7.27 million

Issued shares : 72.7 million

Issued options (30c due Sept 2010) : 36.4 million

Top 20 shareholders (at 13/3/08) = 42.8%

Cash reserve (at 31/12/07) = \$4.84 million



Assets

- 8,182 km² of 100% owned tenements in South Australia
- 8,734 km² of joint-venture owned tenements, with JV partners Flinders Diamonds (FDL) and Maximus Resources (MXR)
- Employed a highly skilled and experienced team of eight full-time geology/mining development professionals, plus specialist consultants



Three-pronged approach

Exploring for copper, gold and uranium in South Australia

1. Olympic Domain

Long lead time, high risk, high return

2. Adelaide Fold Belt

Potentially short lead time, low risk, medium-high return

3. Value-Adding Acquisition

Short lead time; low risk; low-medium return

Work to date has been about building a resource base of tenements and people, the next stage in the evolution of Copper Range is to focus in on those things that will lead to a cash flow within two years and/or add significant shareholder value

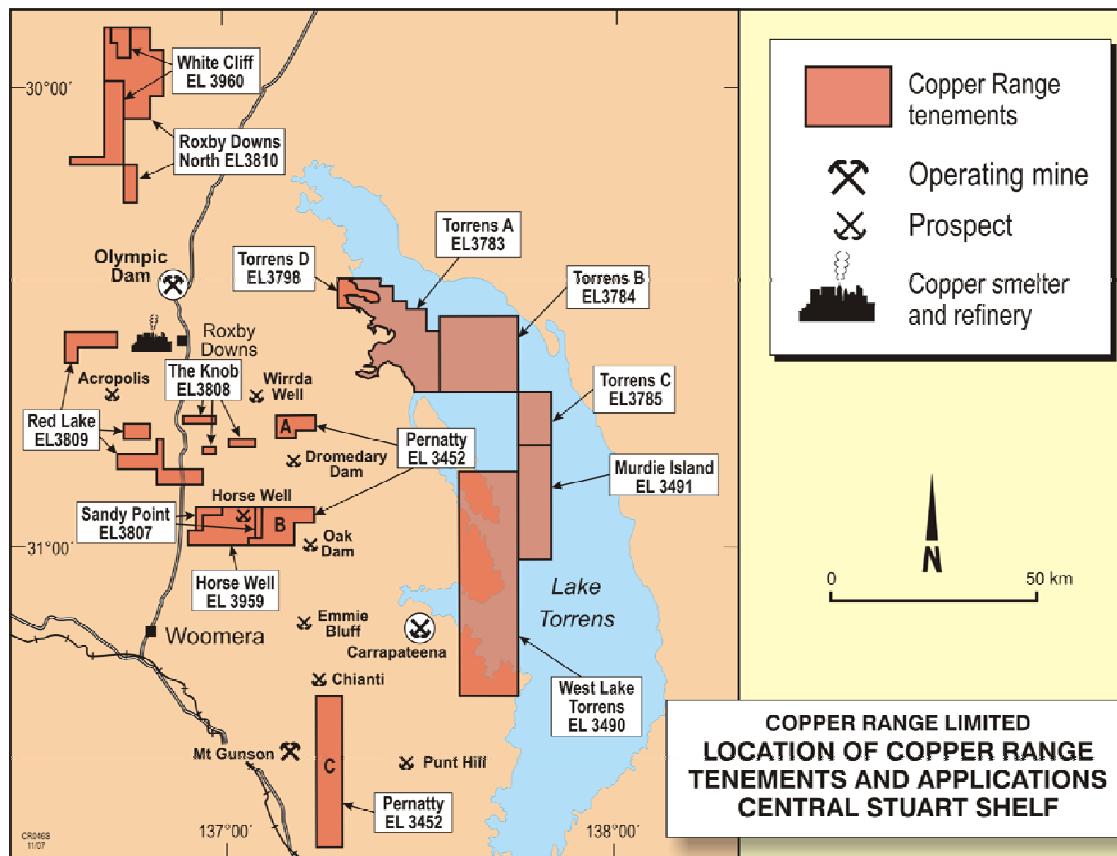
Olympic Domain – Significant tenement position

Highly prospective area for large IOCG style orebodies as evidenced by Olympic Dam and Prominent Hill

Recent copper discoveries include Carrapateena, Chianti and Punt Hill

Interesting new mineralised discoveries in sediments rather than basement, suggesting possible alternate orebody model

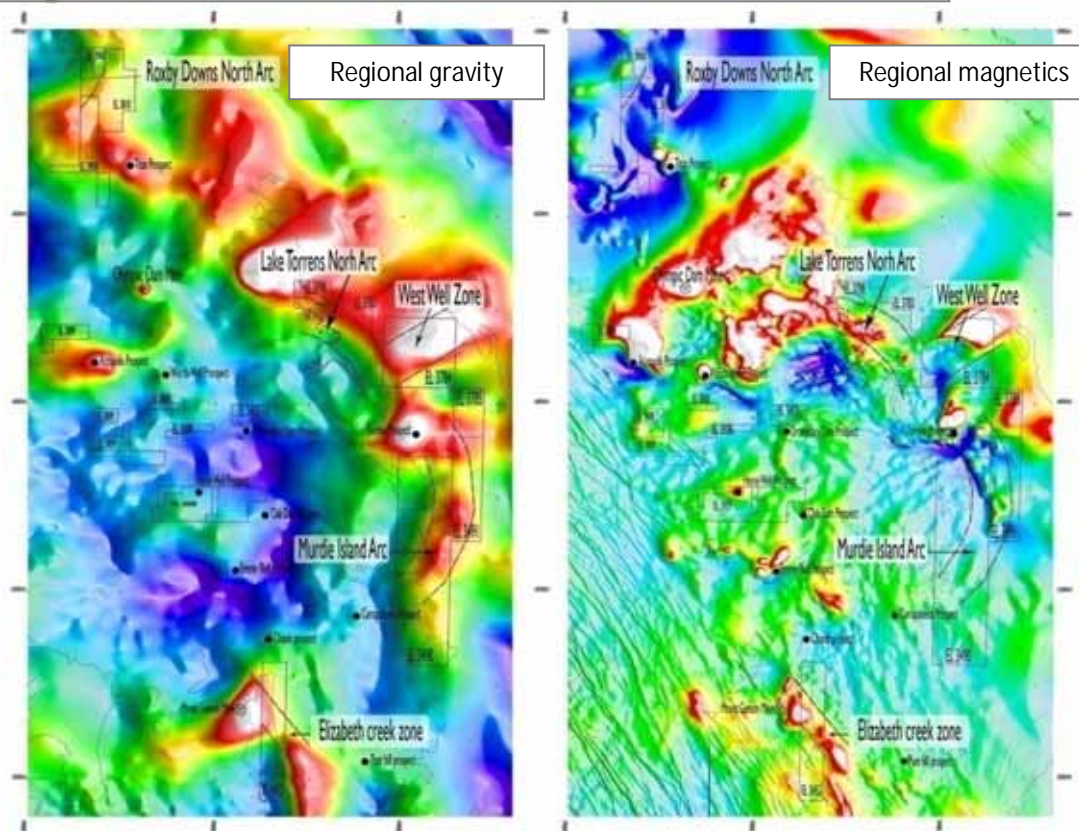
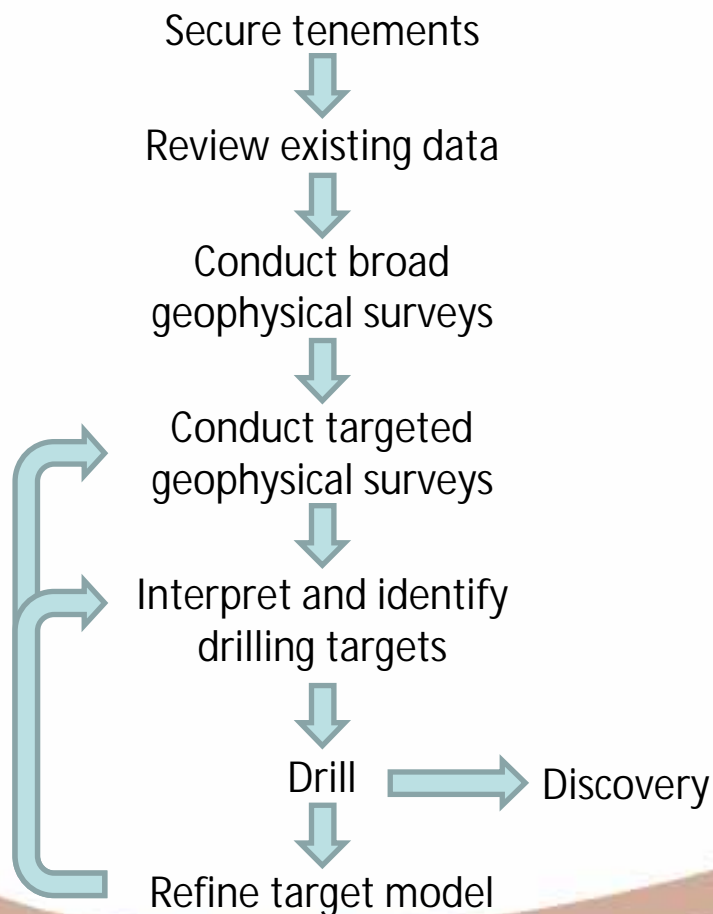
Copper Range has 2,952 km² of tenements in the Olympic Domain



CRJ Olympic Domain tenement map

Olympic Domain – Exploration process

Due to the extensive and often deep cover rocks above the IOCG target zone, exploration within the Olympic Domain is highly dependent on geophysics



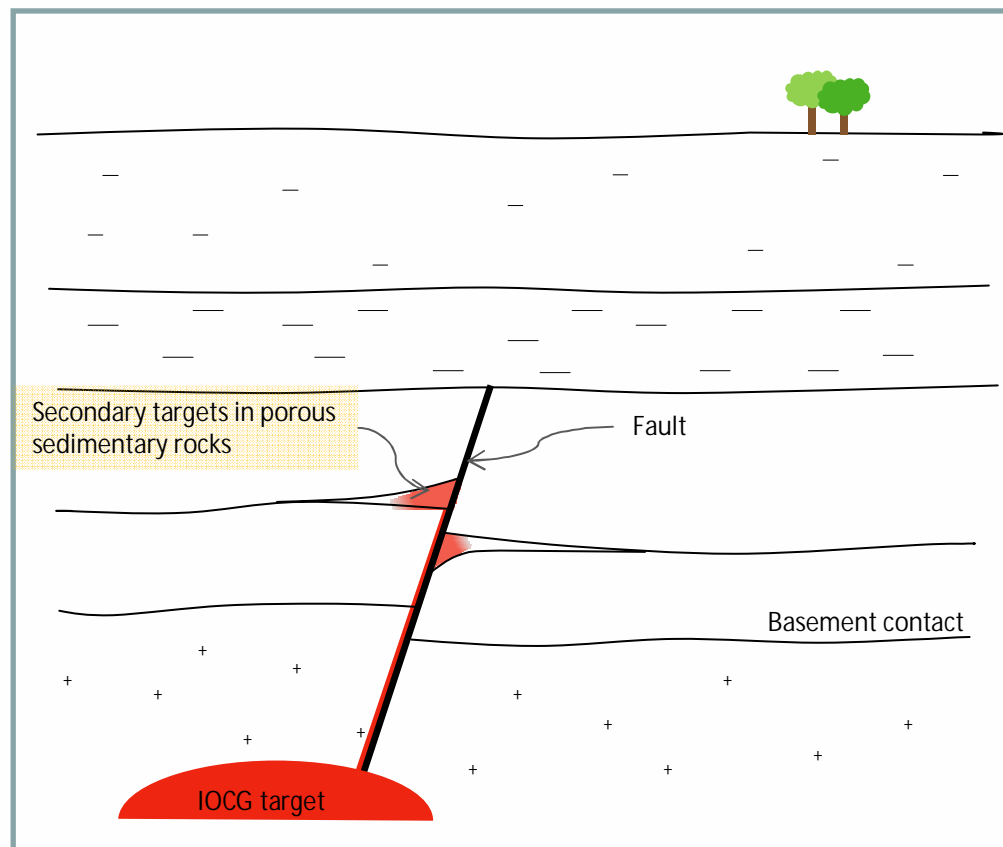
Olympic Domain – Possible secondary targets

Remobilisation of mineralisation from IOCG's may explain mineralisation in the sedimentary cover sequences

If so, then current IOCG geophysical modelling would not identify these targets

Targets will be shallower, but need to understand the significance of the structure and the right environment for volume and/or grade enrichment

Mt Gunson style mineralisation?



Possible sedimentary targets

Olympic Domain – Torrens targets

Torrens A/B

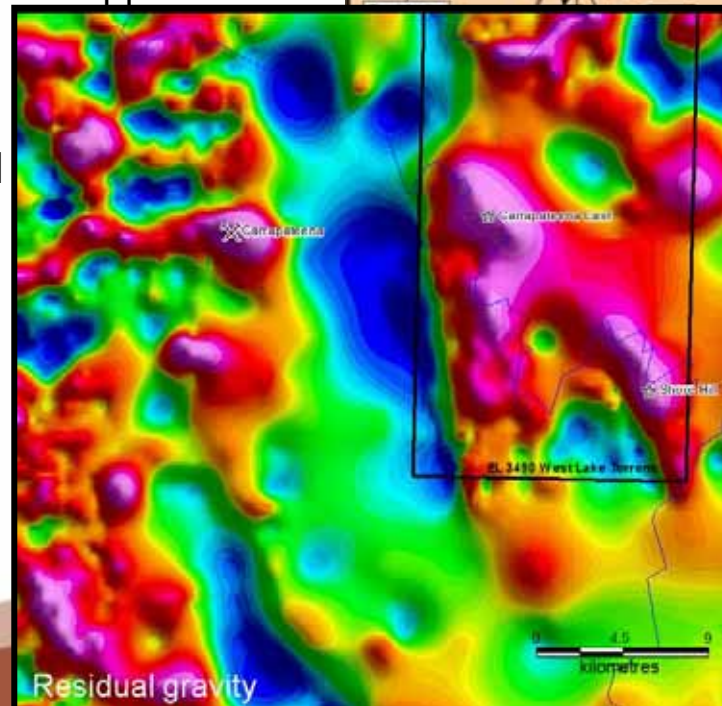
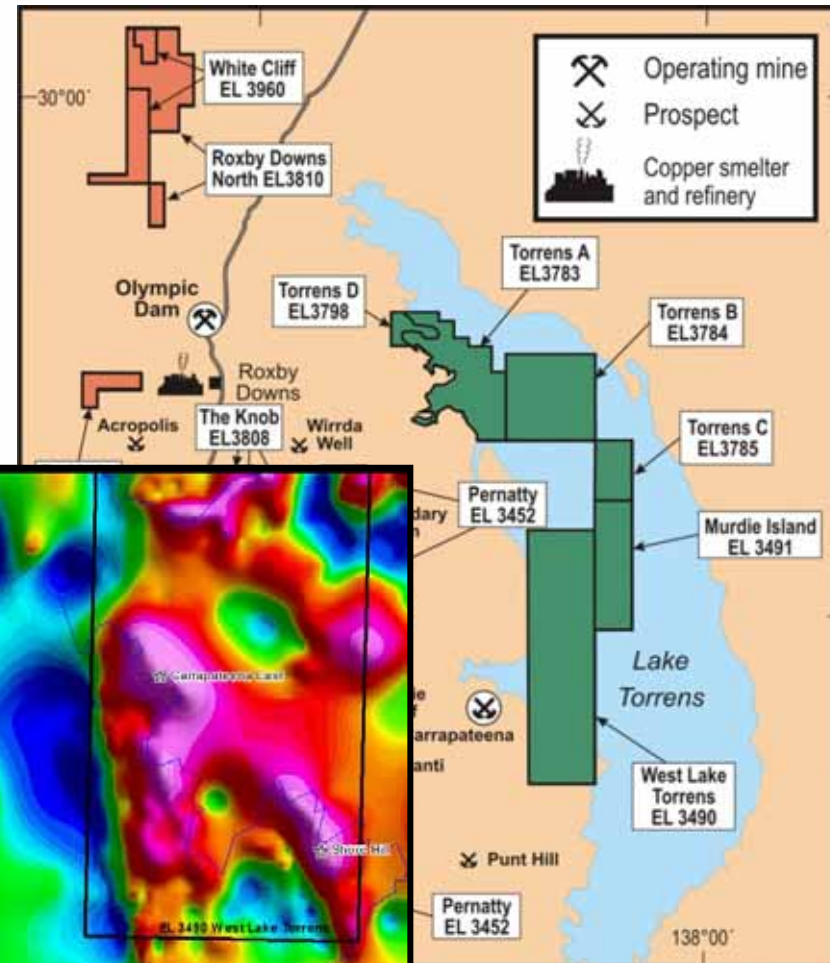
Geophysical anomaly from detailed surveys within Lake Torrens. Needs PIRSA approvals to proceed.

Murdie Island

Excellent geophysical target beneath an island on Lake Torrens. Seeking PIRSA approvals.

Carrapateena East & Shore Hill

Recently identified gravity targets which need detailed surveys.



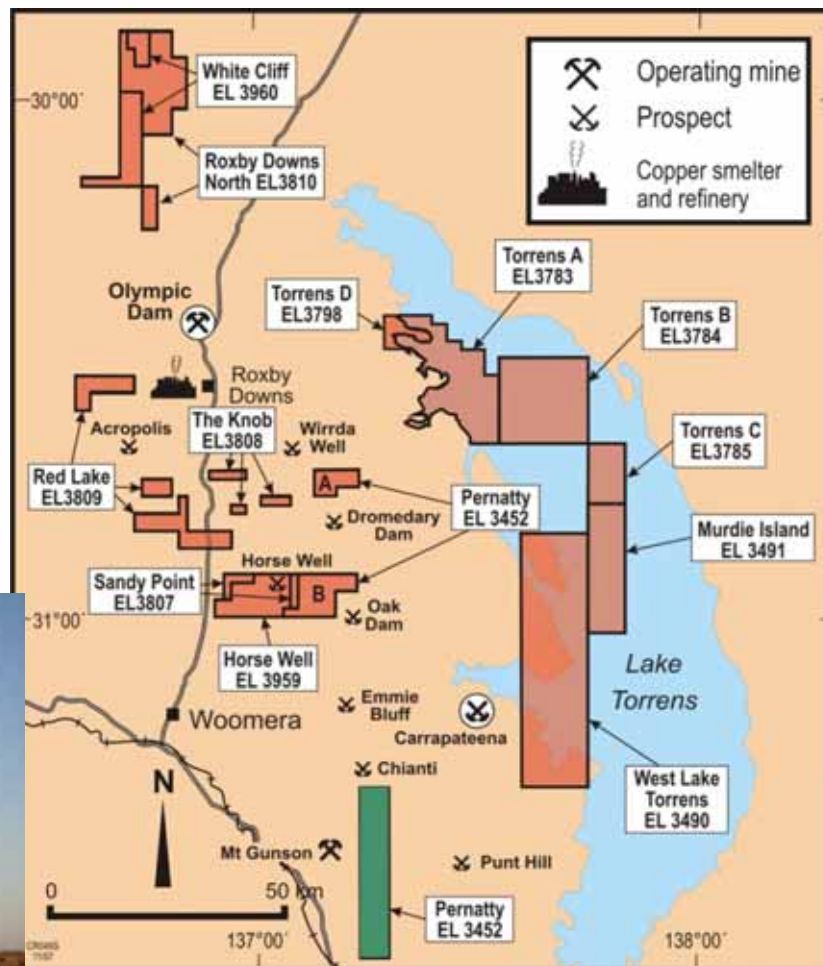
Olympic Domain – Pernatty C targets

Emily

IP generated target for secondary mineralisation in sediments. 800m from previous drill hole with 2m @ 8.3% Cu.

Pepeta

Recent drilling identified altered basement, haematite and minor brecciation. Copper and zinc mineralisation identified in the sediments



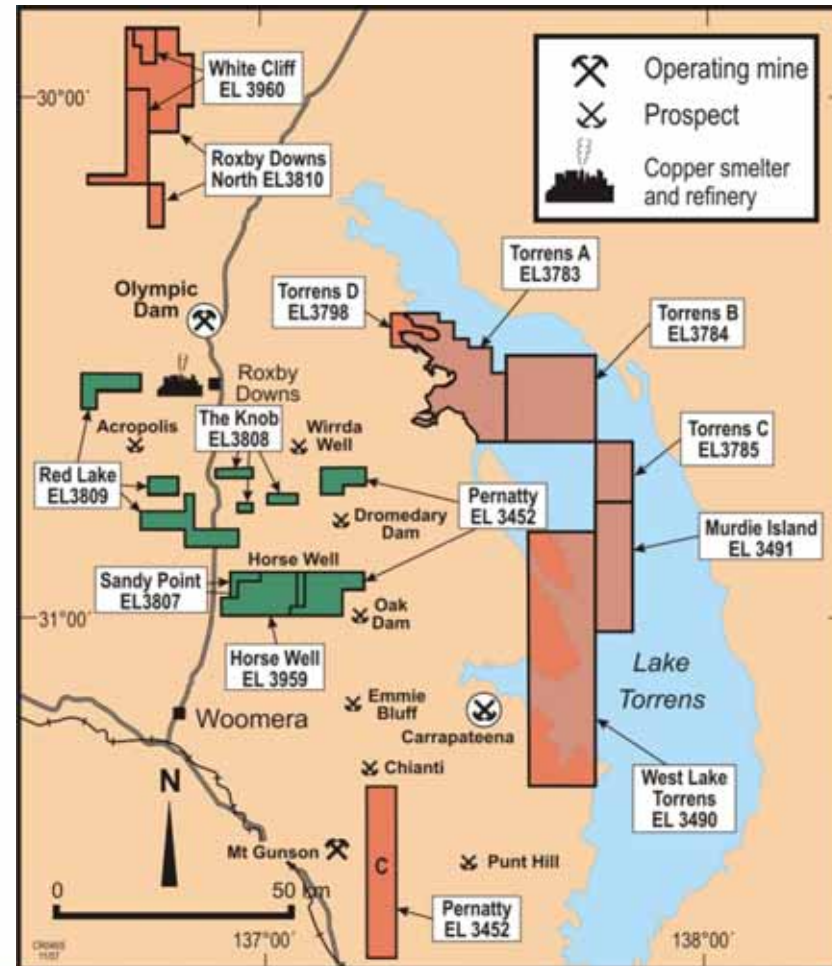
Olympic Domain – Arcoona & Roxby

Horse Well

Potential sediment hosted target between regional fault and previously identified copper from WMC drilling (16m @ 0.67% Cu)

Red Lake

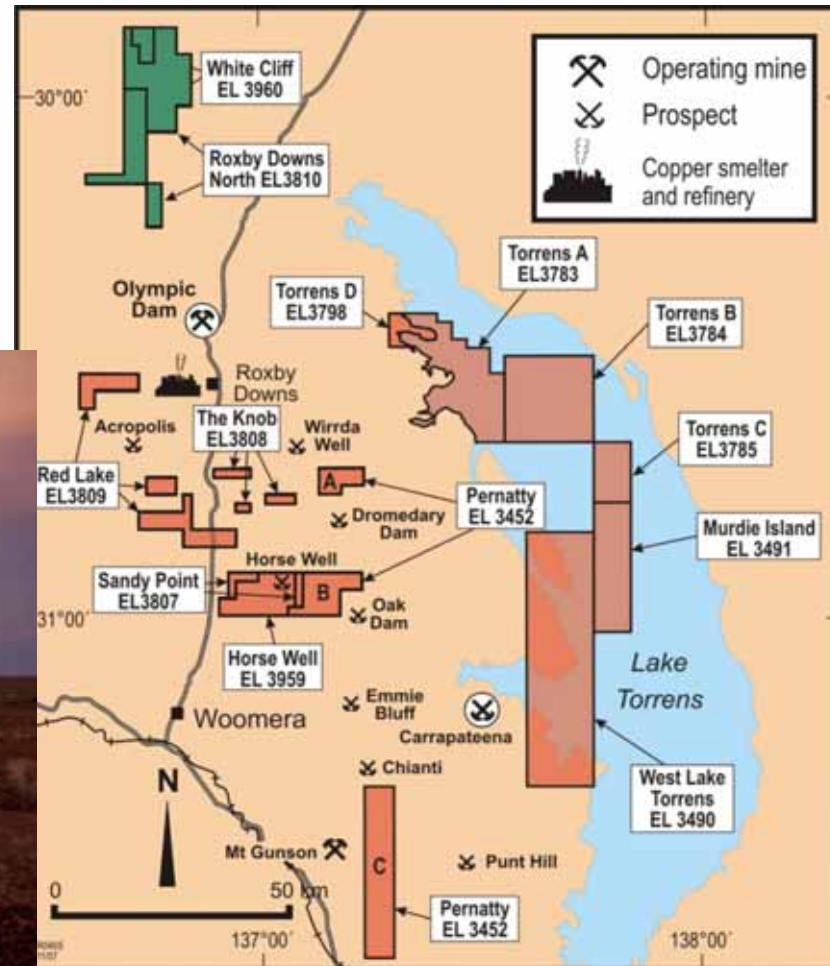
Geophysical anomaly adjacent to BHPB's Acropolis discovery



Olympic Domain – Roxby North

Roxby Downs North

Detailed geophysical surveys to be carried out in April





Adelaide Fold Belt– CRJ & JV tenement position

Prospective area for Central African-style large sediment hosted copper deposits

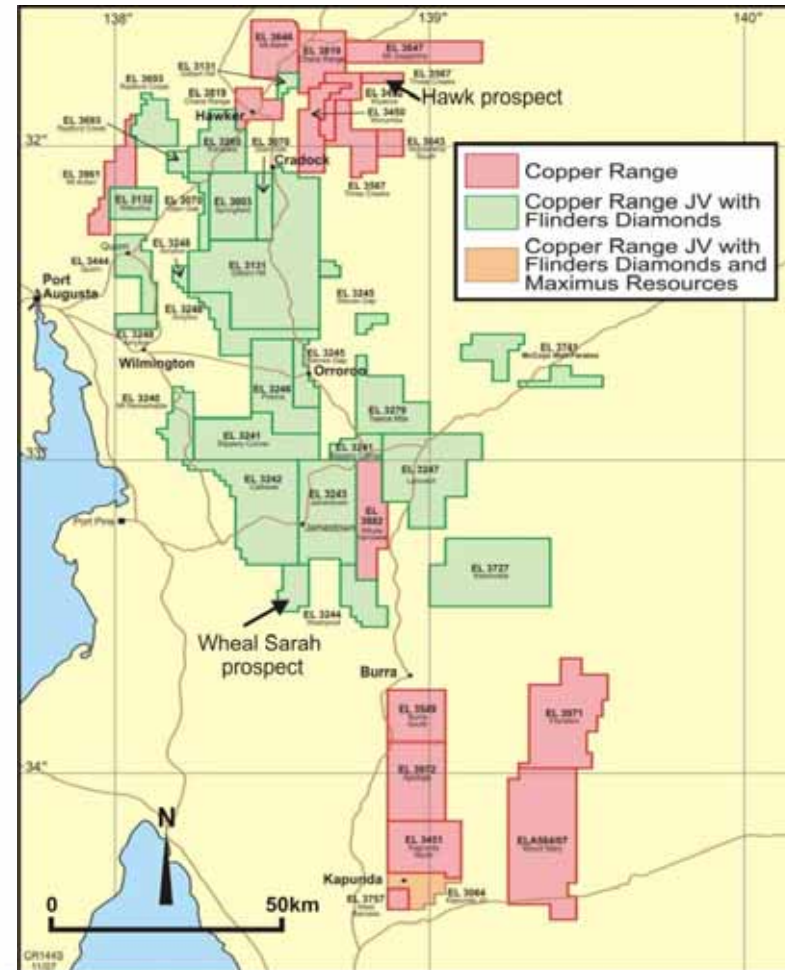
Highly prospective for shallow copper oxide and/or gold deposits

The region has hosted over 800 copper mines or workings since the 1850's

The AFB accounted for ~70% of South Australia's gold production prior to Olympic Dam

Copper Range has 12,187 km² of tenements in the Adelaide Fold Belt (72% held under JVs)

Copper Range has recently been granted 1,777 km² of tenements over the Anabama belt



Adelaide Fold Belt– Wheal Sarah prospect

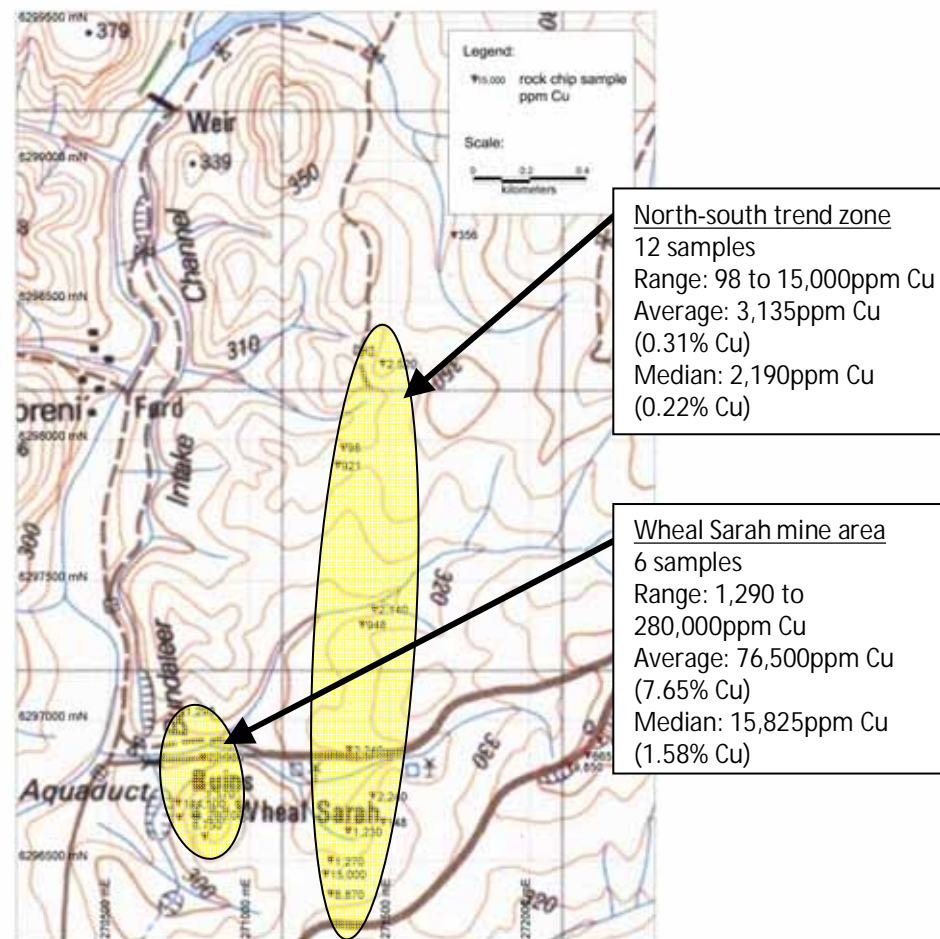
Exciting grab sample assays with copper grades up to 28% adjacent to the mine.

Newly recognized north-south trend over 2km, with average sample grade of 0.31% Cu

Cobalt assays in altered rocks returned >1,000ppm

IP survey to follow to identify and refine RC drilling targets

NB. The Wheal Sarah prospect is on a tenement held under a JV with FDL. CRJ has a right to earn up to 90%.

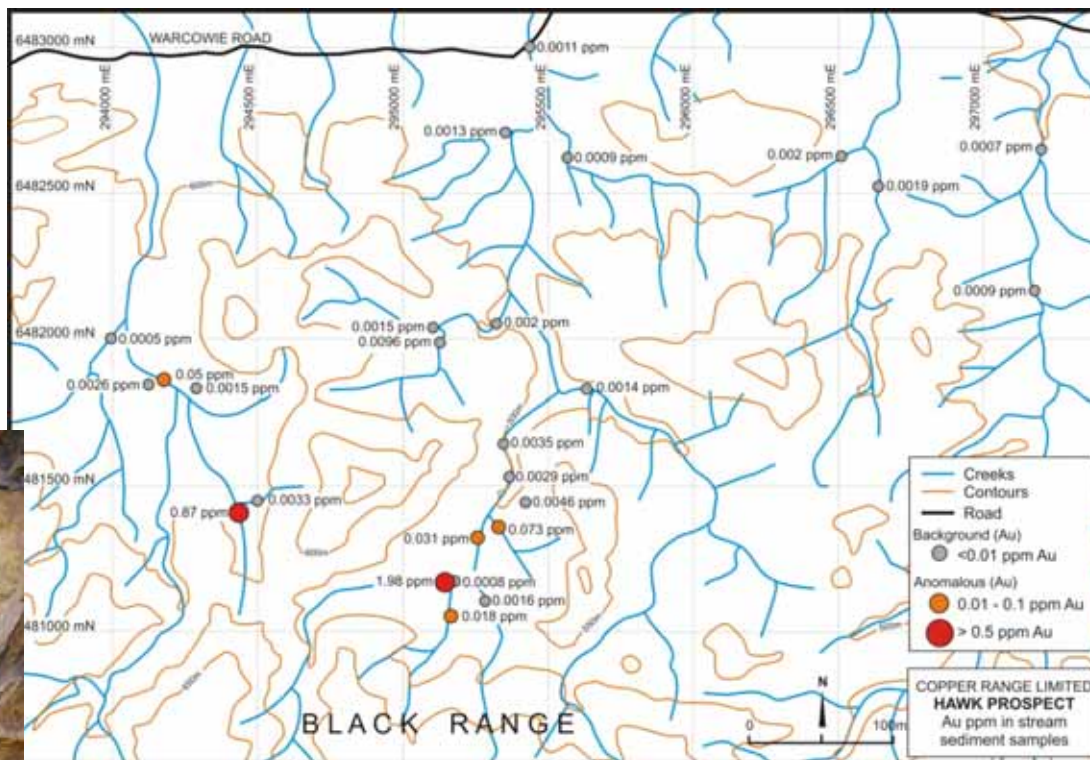


Adelaide Fold Belt– Hawk prospect

26 reconnaissance samples recovered two samples above 0.5g/t.

118 follow-up samples of all creeks have been completed

Quartz-marcasite stockwork system identified in the field



CRJ has 100% ownership of the tenement

Adelaide Fold Belt– Kapunda prospect

14kt of copper historical production from Kapunda.

1960s IP surveys show strong anomalism associated with the Kapunda mine. The anomaly continues south under cover. CRJ to conduct modern IP surveys in April 2008

Previous owners have declared resources of 40kt to 70kt contained copper (Non-JORC compliant)

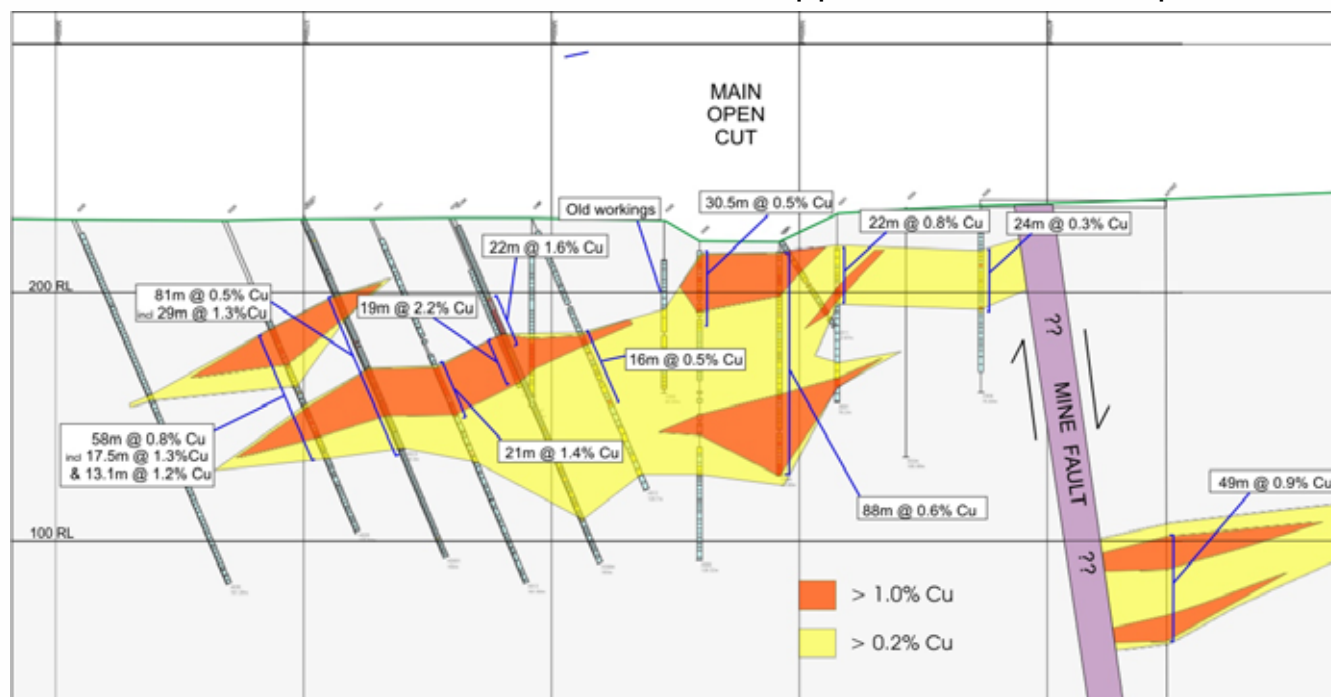
Regionally

RUBBISH-TIP RIDGE – 2

previous Utah DHs incl.
10m @ 0.6% Cu

STEPHENS MINE - numerous historic workings on east side of Kapunda Dome

ILLAWARA – discovered by farmer in the 1970s. Only tested by shallow auger drilling incl. 4m @ 4.2%Cu



NB. The Kapunda prospect is on a tenement held under a JV with FDL & MXR. CRJ has a right to earn up to 90%.



Value-Adding Acquisition

Copper Range have the skills to assess and develop mining projects

Rob Scargill – Managing Director

Rob is a Mining Engineer who has been involved in three feasibility studies and three mine developments, including BHPB's Cannington mine & Lewis Decline, Gympie

Mike Ware – Exploration Manager

Mike has been involved in numerous exploration, processing and mining studies and mine development throughout the World, including Salar de Rio Grande, Argentina & Shumiral alluvial gold mine, Ecuador

Joseph Ogierman– Senior Geologist

Joseph has experience in feasibility studies, mine developments and has run his own mines. Projects he has been involved in include Terramin's Angas project & MIM's Tick Hill gold mine

CRJ have identified a number of under-utilised small-medium mineral discoveries in South Australia, where the application of professional mining engineering and geology can add significant value.

CRJ is currently evaluating some of these opportunities.



Three-pronged approach

Exploring for value-adding opportunities within South Australia

1. Olympic Domain

Long lead time, high risk, high return

2. Adelaide Fold Belt

Potentially short lead time, low risk, medium-high return

3. Value-Adding Acquisition

Short lead time; low risk; low-medium return

Work to date has been about building a resource base of tenements and people, the next stage in the evolution of Copper Range is to focus in on those things that will lead to a cash flow within two years and/or add significant shareholder value



Disclaimer

This presentation has been prepared by Copper Range Limited. The information contained is a professional opinion only and is given in good faith.

Certain information in this presentation has been derived from third parties and though Copper Range has no reason to believe that it is not accurate, reliable or complete, it has not been independently audited or verified by Copper Range.

Any forward-looking statements in this presentation are subject to uncertainties, risk and contingencies which are outside the control of, and may be unknown to, Copper Range. They relate only to the date of this presentation, they assume the success of Copper Range's strategies, and they are subject to significant regulatory, business, competitive and economic uncertainties and risk. Actual future events may vary materially from the statements and the assumptions on which the opinions are based.

Copper Range makes no representation or warranty as to the accuracy, reliability or completeness of the information in this document and does not take responsibility for updating or correcting any errors or omissions which may become apparent after this is released.

To the extent permitted by law, Copper Range and its officers, employees, related bodies and agents disclaim all liability, directly, indirectly or consequentially, for any loss or damage suffered by a recipient or other persons arising out of, or in connection with, any use or reliance on this presentation or information.