



ASX/Media Release
19 November 2008

CRJ 2008/23

Copper Range granted approval for geophysics survey on Lake Torrens

- **Significant step towards defining highly prospective IOCG targets in West Lake Torrens**

Australian exploration company Copper Range Limited (Copper Range) (ASX: CRJ) is pleased to announce that it has been granted approval access Lake Torrens to undertake a detailed gravity survey on the salt lake's surface. The approval, granted by the Department of Primary Industries and Resources of South Australia (PIRSA), covers a significant area within the Company's **West Lake Torrens** tenement (EL3490).

This long-awaited approval is a significant step towards defining two prominent residual gravity high anomalies at **Carrapateena East** and **Shore Hill**, which were announced in April 2008. These anomalies are located 15km and 23km respectively east of Teck-Cominco's Carrapateena discovery.

Please refer to Figure 1, which shows the approved Lake Torrens Southern survey area and Figure 2, which outlines the Carrapateena East and Shore Hill residual gravity targets, both of which are attached to this announcement.

Last week Copper Range announced that major global gold company Barrick Gold had entered into a \$5 million farm-in agreement to several of the Company's Olympic Domain tenements, including West Lake Torrens. Copper Range is now working with Barrick Gold to expedite early exploration programmes over the tenements included in the farm-in agreement.

Copper Range has identified a number of prospective targets within the Olympic Domain tenements and the Company is delighted to have a partner of the calibre of Barrick Gold to provide the necessary financial and technical resources to actively explore the area.

ENDS

For further information please contact;

Rob Scargill
Managing Director
Copper Range
Ph: 0418 775 298
E: rscargill@copperrange.com.au

James Moses
Media and Investor Relations
Fortbridge Consulting
Ph: 0420 991 574
E: james.moses@fortbridge.com

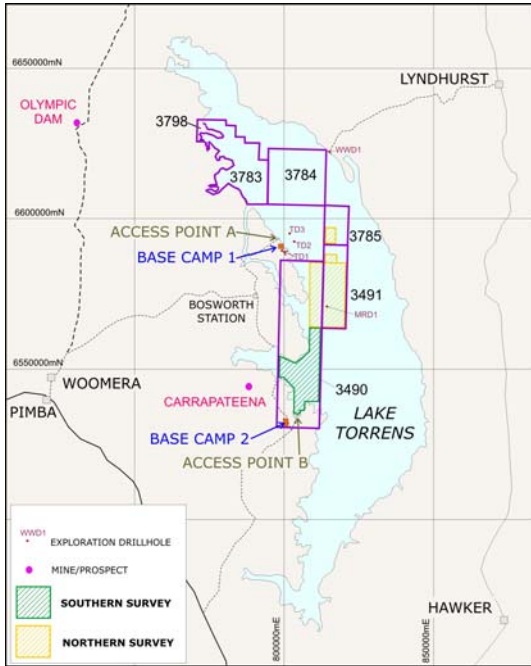


Figure 1: Southern survey area approved

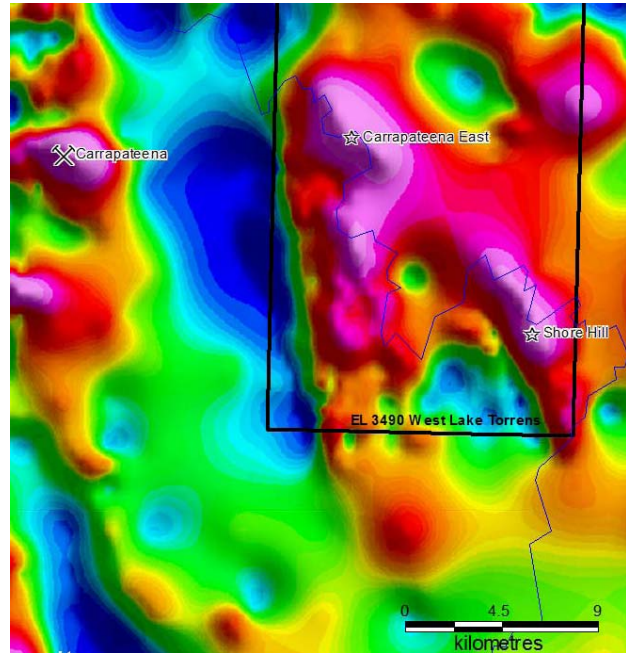


Figure 2: Carrapateena East and Shore Hill residual gravity targets